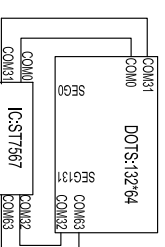
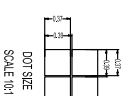
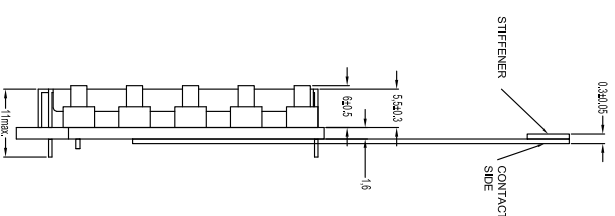
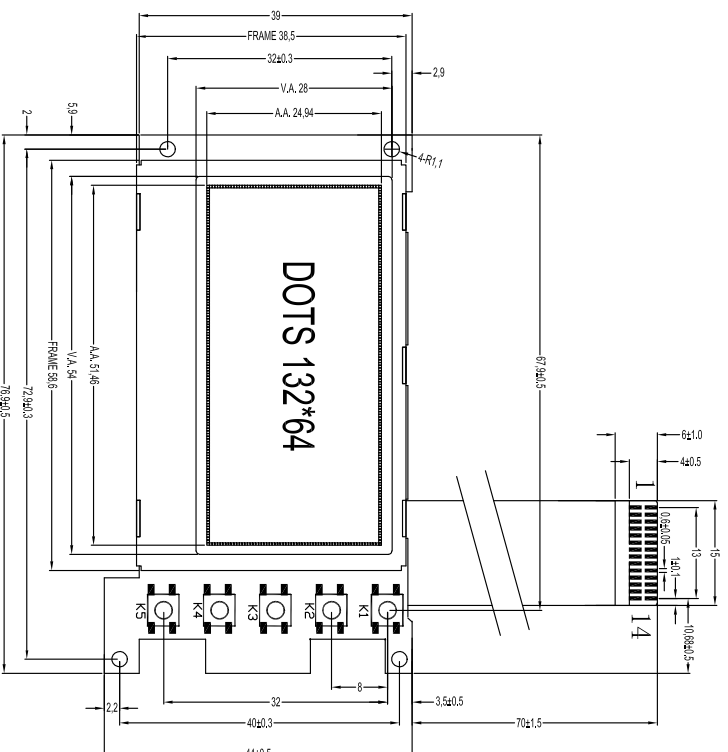


Customer approval :



PIN	1	2	3	4	5	6	7
CONNECTION	/CS	/RST	RS	SCK	SDA	VDD	VSS
PIN	8	9	10	11	12	13	14
CONNECTION	K5	K4	BLA	K3	K2	K1	NC

- Specification:
- 1). Driving: Duty:1/64, Bias:1/9 V/LCM:3.3V
 - 2). Viewing Direction: 6 O'clock
 - 3). Display mode: STN/Y-G/Positive/Ttransmissive
 - 4). Operating temp.: -20°C~+70°C
 - 5). Storage temp.: -30°C~+80°C
 - 6). IC: ST7567
 - 7). Backlight: GREEN
 - 8). All the raw materials are RoHS compliant

REV	REVISION RECORD	DATE	MODEL NO.				GENERAL TOL: ±0.3	
A0	First issue	7-30/11	SYG13264B_V10				未注公差	
			APPROVED BY	CHECKED BY	DRAWING BY	PAGE: 1 OF 1		
						UNIT: mm		
			Jequil			PROJECTION 三角法		

深圳市三元晶科技有限公司
ShenZhen TCC LCD Hi-Tech Co., Ltd.

