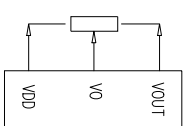
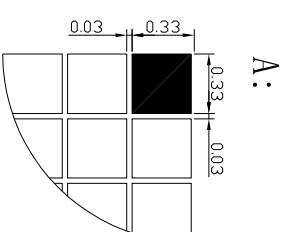
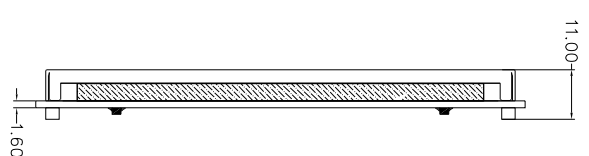
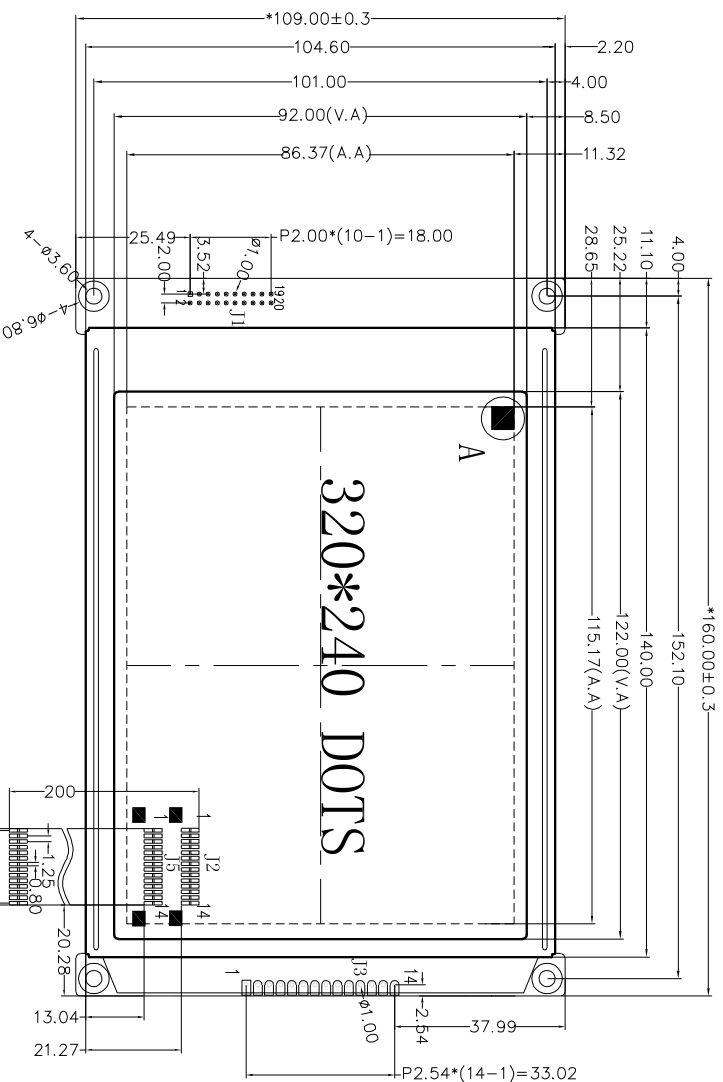


Customer approval :



SPECIFICATION:

- 1). Driving: Duty:1/240, Bias:1/17, VOUT:-21.5V, V0:-18.5V, VDD:5V
- 2). VIEWING DIRECTION: 6 O'CLOCK
- 3). Display mode: STN/Negative/Transmissive/Blue
- 4). Operating temp.: -20° C~+70° C
Storage temp.: -30° C~+80° C
- 5). Control IC: RA8835AP3N
- 6). BACKLIGHT Type: White 5V 160ma
- 7). DIMENSIONS WITH MARK "*" ARE IMPORTANT WITH MARK "()" ARE REFERENCED
- 8). All the raw materials are RoHS compliant

接口选择使用，FPC选择使用

1	2	3	4	5	6	7	8	9	10	11	12	13	14	15	16	17	18	19	20
GND	VCC	VO	A0	WR	RD	DB0	DB1	DB2	DB3	DB4	DB5	DB6	DB7	CS	RST	VOUT	SEL1	BLA	BLK
J1	J2	J3	J4	J5															
D0	D1	D2	D3	D4	D5	D6	D7	D8	D9	D10	D11	D12	D13	D14	D15	D16	D17	D18	D19
D0	D1	D2	D3	D4	D5	D6	D7	D8	D9	D10	D11	D12	D13	D14	D15	D16	D17	D18	D19
D0	D1	D2	D3	D4	D5	D6	D7	D8	D9	D10	D11	D12	D13	D14	D15	D16	D17	D18	D19

REV	REVISION RECORD	DATE
A0	First issue	03/15



深圳市三元晶科技有限公司
Shenzhen TCC LCD Hi-Tech Co., Ltd.

MODEL NO.	SYM320240B8V50	GENERAL TOL: ±0.3
APPROVED BY		UNIT: mm
CHECKED BY		PROJECTION
DRAWING BY	LAN	

REV	REVISION RECORD	DATE	MODEL NO.	APPROVED BY	CHECKED BY	DRAWING BY	GENERAL TOL: ±0.3
A0	First issue	03/15	SYM320240B8V50			LAN	UNIT: mm